

# ArcticSpring 100C

Massive Hot Water Boiler & Direct Chill Combination

An 8ltr 2.8 kw  
Hot Water Boiler

The Direct  
Chiller Delivers  
30ltrs Per Hour Of  
Water Less Than  
12°C!



18ltr per hour  
Capacity, Instantly  
Delivers 20 cups of  
tea (5ltrs) at  
a constant 90°C+

23cm Dispensing  
Height To Fill  
Bottles

- Massive hot water capacity - 5ltr instant draw off with 18ltr per hour above 90°C hot water
- 2.8 kw boiling element
- Excellent chilled capacity of 30ltr per hour below 12°C
- 8 screws to open boiler lid for easy access for de scaling and servicing
- Save electricity & be green. Eco light sensor turns the boiler off when the office lights go out. This saves about 25% or £40pa in electricity & reduces carbon
- Avoid scale in a hard water area by connecting the hot water inlet to a Brita type scale REMOVAL filter & a cheaper carbon filter to the chiller inlet
- In a soft water area you can connect the hot & the chilled inlets to a single carbon filter
- Our floodguard inlet solenoid avoids large scale flooding
- Impressive 23cm dispensing height

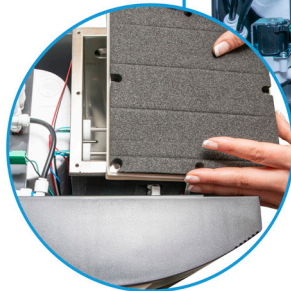
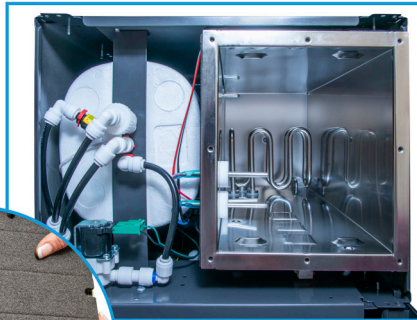
**AA**  
FIRST  
WATER COOLERS  
& BOILERS



refreshingly different

# ArcticSpring 100C

Massive Hot Water Boiler & Direct Chill Combination



8Ltr Hot Tank With 2.8kw Heating Element & Easy Access For Descaling & Inspection

Eco Light Sensor Turns The Boiler Off Overnight To Save Approx 25% or £40 pa in electricity!



Select Hot Or Cold, Then Hold The Dispensing Button Down



In a soft water area you only need a Carbon Filter to connect to the Boiler and the Chiller inlet



In a hard water area you have the option to connect a Scale Removal Filter to the Boiler inlet and a Carbon Filter to the Chiller Inlet. This significantly extends the life of the more expensive Scale Removal Filter

## Accessories For The ArcticSpring 100C



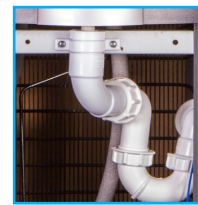
Cooler/Boiler Installation Rail for Soft Water area with a Carbon Filter. Includes compression fitting. Water block. Copper pressure reducing valve and non-return valve



Installation Rail for hard water areas. This includes a carbon block candle for the chilled water inlet & a scale removal filter for the hot water inlet



Overflow Kits; 10 Ltr Overflow Kit to extend the Drip Tray capacity (factory installed) We also supply a 3 Ltr Overflow Kit for self install



Mains Drainage - Connect The Drip Tray To Mains Drainage. Can Be Supplied With A Pump, To Pump The Water Over 50m & A Rise Of 5m

Description	Hourly Output		Temperature		Dimensions H x W x D mm	Weight (Kg)
	Chilled	Hot	Chilled	Hot		
POU Floor Standing	30ltr	18ltr	Below 12C	Above 90C	1135 x 340 x 340	31

Local Distributor



[www.aafirst.co.uk](http://www.aafirst.co.uk)